



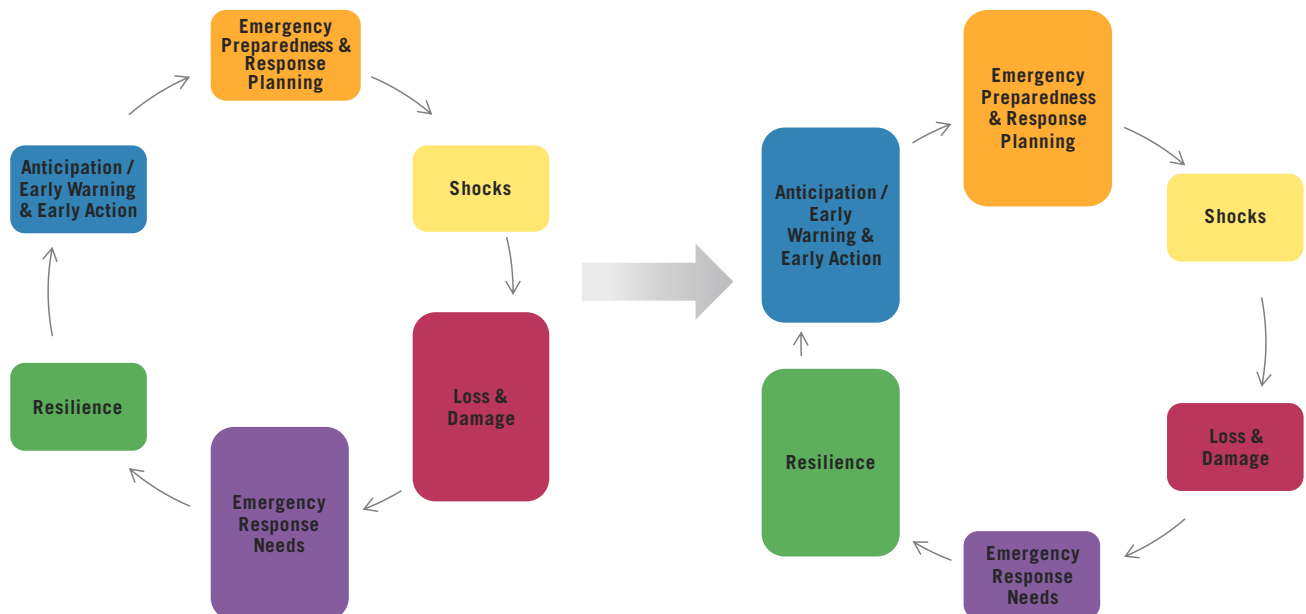
# HUMANITARIAN PROGRAMMING

February 2019

Humanitarian Programming is part of the humanitarian paradigm shift in Welthungerhilfe. The underlying principle is that the decision on development interventions should be based on the risks and dangers to which people are exposed (risk informed development programming). The aim of Welthungerhilfe's development efforts is to strengthen the population's resistance to these risks and dangers (**Resilience**). Whichever risks remain will be countered with early warning systems and prevention and mitigation measures (**Anticipation, Early Warning & Early Action**).

However, the extent of **Shocks** caused by extreme natural events or man-made crises is very rarely fully foreseeable. In other words, despite the improved resilience of the people at risk, and the adoption of preventive measures, people can find themselves in life-threatening, precarious situations (**Emergency Response Needs**). For these situations, it is particularly important to be prepared and to plan at an early stage so that one can react quickly and appropriately to a crisis situation if necessary (**Emergency Preparedness & Response Planning**).

## The Humanitarian Paradigm Shift

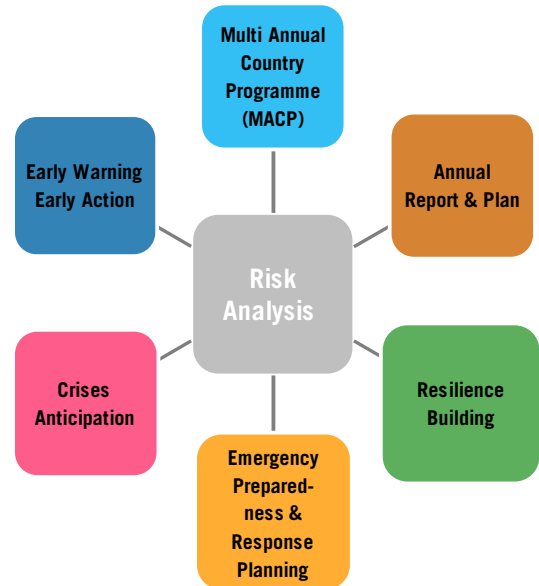


More anticipation and preparedness for less losses and better response!

This paradigm shift, away from a pure crisis response to anticipatory humanitarian aid, which already becomes active when a crisis/disaster looms (i.e. the risk of which is significantly increased), is visualised in the graph. This paradigm shift helps to reduce death, suffering and loss of livelihoods (**Loss & Damage**), and also leads to a more efficient use of resources (**Reduce Loss of Lives and Cost of Response**).

The implications of humanitarian programming are two-fold. For our country programmes. Welthungerhilfe learns from loss and damages caused by disasters in the respective countries, and from this derives measures to strengthen the resilience of people. In addition, country programming incorporates risk analysis as a central element for risk informed development programming towards resilience building and sustainability of Welthungerhilfe interventions. Here the results of the country risk analysis, which is already an integral part of the Emergency Preparedness & Response Planning, are used in a multi-fold manner in Welthungerhilfe, as shown in the figure on the right.

## Risk Analysis



Risk Analysis being a central element for risk informed development programming towards resilience building and sustainability

### Contact

Humanitarian Directorate  
Deutsche Welthungerhilfe e.V.  
E-Mail: [HD@welthungerhilfe.de](mailto:HD@welthungerhilfe.de)