



WELTHUNGERHILFE WHH



Picture source: Welthungerhilfe

Capability Statement

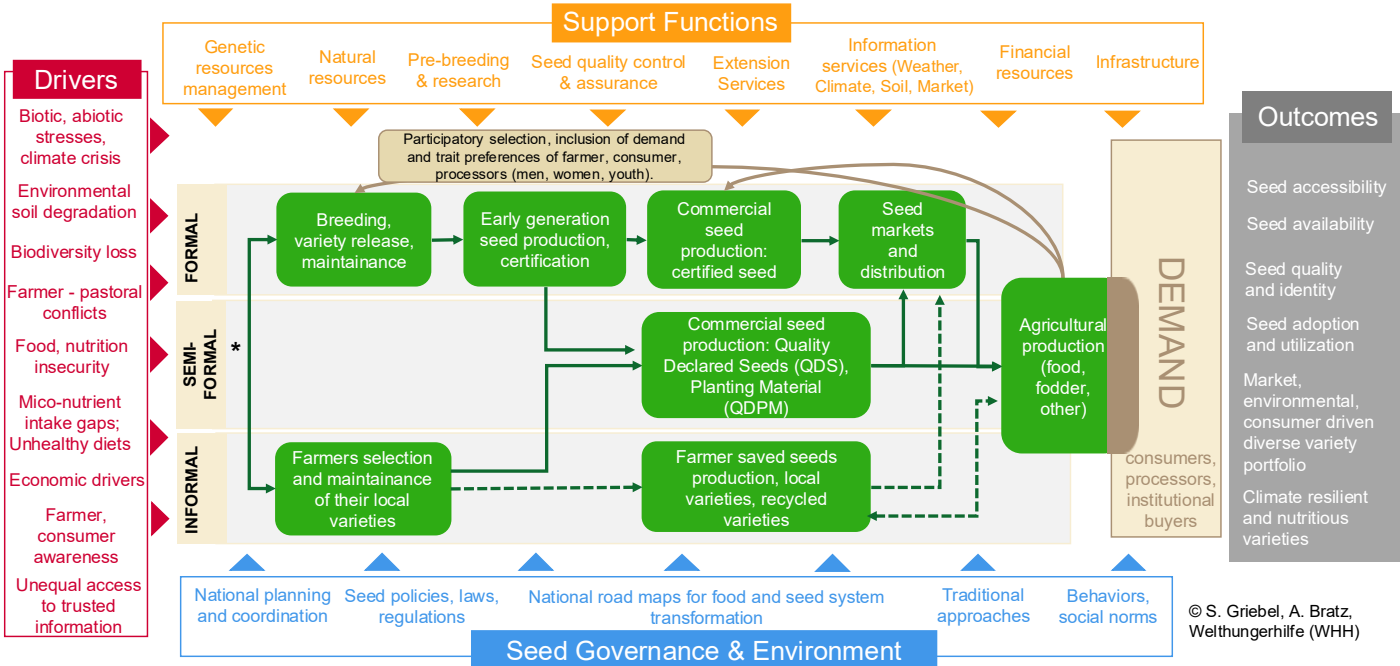
SEED SYSTEM APPROACH



WELTHUNGERHILFE'S STRATEGIC APPROACH

Welthungerhilfe (WHH) accelerates seed system development as a key lever for food systems transformation, in line with our global strategy for Zero Hunger on a Healthy Planet. Farmers need breakthrough solutions to drive agriculture-led growth, optimal nutrition, soil health, agro-biodiversity, and climate resilience. This is why we aim to transform entire national seed systems, rather than addressing isolated components. We accelerate seed systems to deliver economically viable, nutrient-dense, diverse, locally adapted seeds - through knowledge services, institutional strengthening, value chain and market development, and equitable seed governance.

We work on seed systems in 15 countries. Our most ambitious seed systems programs in the Central African Republic (CAR), Niger, the Democratic Republic of the Congo (DRC), and Myanmar, have a combined portfolio value of \$27m.



© S. Griebel, A. Bratz, Welthungerhilfe (WHH)

WHH's original seed system framework guides us in diagnosing seed systems and identifying high-impact leverage points for action across four dimensions.

- 1. Seed System Drivers:** We analyze market opportunities, climate risks, farmer and consumer preferences across ages and genders, and dietary needs. We co-develop user-driven variety profiles for improved breeding and variety promotion and foster trusting inclusive communication between system actors. We prioritize opportunity crops, locally adapted varieties, and biofortified varieties that optimize between income, resilience, and nutrition.
- 2. Support Functions:** WHH strengthens key institutions – particularly national research, extension and seed certification authorities – through rehabilitation of research stations, staff training and capacity sharing, guidance on early generation seed production, functional quality assurance systems, digital demand forecasting systems, participatory and inclusive collection, characterization and conservation of genetic diversity.

3. Inclusive Seed Value Chains: We strengthen formal, semi-formal and informal seed value chains. We create and capacitate certified seed producer groups and promote farmer-managed seed selection. We scale innovations and strengthen seed market systems through variety profiling, seed fairs, varietal demonstration plots, market links with buyers, and participatory oversight to ensure seed market compliance with international standards.

4. Seed Governance: WHH contributes to national seed policies, seed actor platforms and improved coordination and planning. We integrate land rights, equitable governance and social accountability. We help governments translate regulations into practice and improve national planning for seed demand and supply.

KEY INTERVENTIONS AND RESULTS

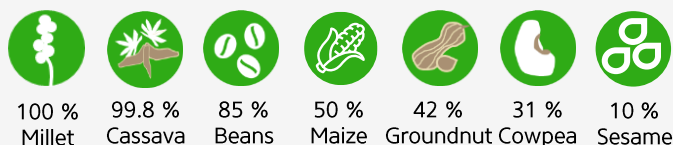
The Central African Republic (CAR) is WHH's flagship in seed system transformation. In close partnership with farmers, ministries, government and research institutions, WHH has rebuilt the national seed system since 2014. Together, we have:

- **Enhanced the national research capacity** of the national agricultural research organization ICRA: rehabilitating six research stations and strengthening technical staff capacity to produce early-generation seeds and maintaining varieties. Providing an enabling environment for the next phase, the first breeding program development.
- **Leveraging genetic diversity for growth** through the ongoing establishment of a national genebank and the collection, characterization and use of local ecotypes (sesame, sorghum, groundnut) to ensure resilience against current and future shocks.
- **Strengthened the public extension service** ACDA through equipment and know-how to better support seed producers and smallholder food/fodder producers.
- **Activated the national seed certification authority** ONASEM in a joint push of WHH, FAO, and ICRA. WHH also provided capacity strengthening to ONASEM to set up its seed certification process - improving the country's ability to ensure seed quality and regain farmer's trust.
- **Created a nationwide network of registered seed producers for certified seed production** – 522 seed producer groups were established with WHH support, covering 84% of all seed producers in CAR. We engage women as seed producers, group leaders and board members. Women act as role models, control seed revenue and re-invest income in additional businesses.

In the next phase of our seed system work in CAR, we will develop the first breeding program in the country together with public and private breeders, focusing on locally adapted, nutritious, and economically viable varieties.

- **Increased certified seed availability in quantity, quality and at scale** – the 522 WHH-supported seed producer groups cover **60% of CAR's total seed production area** and are active in 12 prefectures (14 out of 20 prefectures in CAR produce seeds) across all climatic zones.

Of all certified seeds produced in CAR, WHH-supported groups produce an estimated proportion of:



... that can meet up to **60% of farmer demand** for groundnut seeds and up to **100% of farmer demand** for maize, beans and cowpea seeds in a given region. Crops like millet, sorghum, sesame and cassava are in early stages of scaling.

- **Balancing distribution and linking market actors to enhance certified seed accessibility at scale:** Enabled more than **106,000 farmers in current projects** to access certified seeds of climate-resilient and nutritious varieties in 19 of 20 prefectures.
- **Contributed to inclusive seed governance** by supporting national coordination and planning, strengthening the seed actor platform, and informing seed policy development.
- **Conducted a participatory seed system diagnosis at national, regional and local level.** This included the collection of gender disaggregated data.

In **Niger**, WHH and partners have developed a scalable model to strengthen formal seed systems while supporting community-led adoption in fragile and hard to reach areas. We achieved:

- **Set up 50 seed producer groups** across Diffa, Tillabéri and Tahoua, producing certified millet, sorghum, cowpea and groundnut seeds in line with West African seed standards. In Diffa, WHH, INRAN, ICRISAT, communities, seed producers and governmental services pioneered certified seed production.
- **Increased certified seed availability.** In 2025, producer groups established by WHH produced 227 tons of cowpea, millet, sorghum and groundnut seeds sufficient to cover estimated 22,580 ha of farmers' land (mixed cropping) for food production.
- **Supporting farmer-led varietal selection** for certified seed production, enabling communities to adopt climate-resilient and nutrient-rich varieties, including biofortified millet.

In **Eastern DRC**, WHH works with the National Institute for Agricultural Studies and Research (INERA) and the national seed certification authority SENASEM to **expand certified potato seed production**. Two producer groups with a total of 180 trained members now supply high-quality seed potatoes used by more than 4,500 farmers, with demand continuing to grow due to the reliability and quality of the seed.

In **Myanmar**, WHH and Wageningen University played a crucial role in the government's efforts to reform the **rice seed system** working closely with authorities and private sector actors (semi-formal).

- **Involved and incentivized existing private sector actors** (35 smallholder farmer businesses, ten seed producer groups) to increase quality seed production and availability in the market across three regions (Yangon, Ayeyarwady, Central Dry Zone). In total, seven tons of quality rice seeds were produced.
- **Enhanced capacity of governmental research authorities** – Equipped the Department for Agricultural Research (DAR) to handle increased seed demand and provide better quality assurance. Co-Developed and launched a **“Demand and supply” app** for forecasting of quality seeds.
- **Strengthened coordination of relevant stakeholders** - public and private sector, smallholder farmers in regular events.
- **Established, organized and facilitated a multi-actor seed sector platform** on provincial level to exchange, forge new connections, and learn.

WHH works on community seed banks in seven countries globally. In **Zimbabwe**, for instance, WHH has set up **community seed banks (CSBs)** jointly with the Ministry of Agriculture (MoA) and CTD (Community Technology Development Trust) in the provinces Matabeleland North, Matabeleland South, and Manicalands to conserve local diverse varieties to ensure resilience to future shocks and enhance farmer-led seed multiplication. Targeted crops and plants include maize, millets, sorghum, vegetables, wild fruit trees, bambara nuts, groundnuts, pumpkin, beans, okra, rice, amaranth.

NETWORKS & PARTNERS

WHH collaborates with several national and international partners:

- **Country level:** National Agricultural Research and Extension systems (NARES), universities, seed producers, breeders, seed certification bodies, farmer cooperatives, others.
- **Internationally:** Purdue University, Leibniz Institute of Plant Genetics and Crop Plant Research, Julius Kühn Institute - Federal Research Center for cultivated plants, Wageningen University, FAO, and various research centers (e.g. IITA, CIP, WorldVeg, ICRISAT, CIMMYT, Africa Rice), others.
- WHH is a [Champion of the Vision for Adapted Crops and Soils](#)

CONTACT

Stefanie Griebel, Ph.D.

Research collaboration advisor
stefanie.griebel@welthungerhilfe.de

Sector Strategy, Knowledge & Learning Unit
Deutsche Welthungerhilfe e.V.
Friedrich-Ebert-Str. 1, 53173 Bonn,
Germany