

Capability Statement

WASH



THE CHALLENGE

Water, sanitation, and hygiene (WASH) are essential for human life and well-being. Access to WASH is a human right and is linked to issues such as food security, poverty reduction, gender equality, climate action, and education and drives progress in these areas. Successful measures in WASH lead to progress in other areas, promoting overall development.

WASH is included in the **United Nations Agenda 2030** as the **6th Sustainable Development Goal (SDG)**, yet with current implementation efforts the targets set out in SDG 6 will not be met by 2030. Conventional WASH approaches, often focusing on community-level interventions like infrastructure construction, often fail to have a significant impact at scale and lack long-term project sustainability, leading to **'post-project slippage'**.

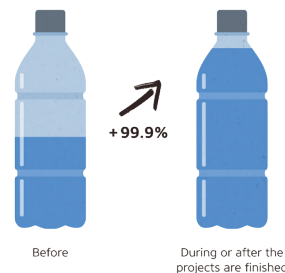
Around the world, 2.2 billion people still lack access to safe drinking water, while 3.5 billion people lack access to adequate sanitation¹. The World Health Organization reports that at least

1.4 million **preventable deaths** occur each year due to unsafe water, sanitation, and hygiene; children under the age of five are particularly affected. To help achieve SDG 6, WHH works to advance projects that **increase access to WASH** for individuals globally, address post-project slippage, ensure the **longevity** of community WASH projects, and promote **system-widesuccess** beyond WASH.



What we have achieved:

Safe Drinking Water Supply



On average, the **number of households using safely managed drinking water services has doubled** (+99.9 percent) over the course of 15 WHH projects implemented between 2014 and 2021.²

© Welthungerhilfe






RESULTS & KEY INTERVENTIONS

With over 120 active projects related to WASH, WHH plans to reach roughly 4 million direct participants in 2024. WHH launches around 30 new WASH projects each year.

WHH has focused on improving **gender equality** through initiatives such as the promotion of Menstrual Hygiene Management for women and girls in rural Uganda and supporting the participation of women in Tajikistan's social life through safe public toilets and health-promoting campaigns.

WASH-related projects also help to address **malnutrition**. In Ethiopia, WHH and its partners supported almost half a million people to address the underlying causes of malnutrition, in part by establishing community development councils to

SNAPSHOT WASH PORTFOLIO IN 2024³

	No. of countries with active WASH projects	29
	No. of active projects with a WASH component	120
	Total volume of active WASH projects	100 million EUR
	No. of direct participants in active WASH projects	4 million
	Average project duration	34 months

¹ <https://www.unwater.org/publications/who/unicef-joint-monitoring-program-update-report-2023>

² <https://www.welthungerhilfe.org/our-work/our-impact>

³ Snapshot of Welthungerhilfe's WASH Portfolio as of August 2024

rehabilitate community water sources. In India, WHH has worked closely alongside national and local governments to create space for **bottom-up planning** where lessons learned from WASH interventions are systematically incorporated to address malnutrition in a holistic way.

By implementing WASH interventions, WHH has also contributed to greater **food security**. In Haiti, for example, WHH has successfully worked on addressing the issue of water scarcity due to recurring drought periods through irrigated agriculture and surface water management.

Finally, WASH initiatives impact **education**. Through the WASH at Schools approach, WHH focuses on improving children's access to safe water and sanitation. In Burkina Faso, for example, up to 320,000 students are provided with access to toilets, thereby improving their health and increasing school attendance, especially among girls. Through the establishment of School WASH Clubs in Malawi, girls and boys become 'agents of change', carrying increased hygiene awareness into their communities.

With 2030 in sight, WHH works to continue to build on such projects, while further integrating systemic approaches.

WELTHUNGERHILFE'S KEY APPROACHES

For the past 60 years, WHH has built a diverse portfolio of WASH activities including **water supply, sanitation services and hygiene behavior change, but also projects promoting WASH in Schools, Menstrual Hygiene Management, WASH as a Business, and WASH and Nutrition**. Since 2016, WHH has been working specifically to address the need for service longevity through the [Sustainable Services Initiative \(SSI\)](#) in partnership with *Aquaconsult* and the *German Toilet Organization*, with financial support from *Viva Con Agua*. As of 2023, the SSI has been rolled out in 10 countries globally.

Taking a systems approach allows WHH to help ensure sustainability for WASH infrastructure and services at the community level, while influencing WASH governance at multiple levels. WHH achieves this by:

- **Providing capacities and services to key actors and service authorities**
- **Utilizing and strengthening existing district and national systems**
- **Ensuring learnings at the policy level**
- **Using only one monitoring and mutual accountability platform**
- **Collaborating with other external support agencies to promote system-oriented advocacy and networking.**

Through these methods, learnings can be replicated across various scales, while actors are better equipped to sustain services across their mandated area, leading to success beyond the WASH system into other related systems.

NETWORKS & PARTNERS

WHH has access to a broad network in the WASH sector, which provides opportunities for exchange with research, sector platforms, publication of lessons learned, and access to international forums.



CONTACT

Stephan Simon

WASH Advisor – Global WASH Team, stephan.simon@whh.de
Sector Strategy, Knowledge & Learning Unit

Deutsche Welthungerhilfe e. V., Friedrich-Ebert-Str. 1, 53173 Bonn, Germany

More information: <https://www.welthungerhilfe.org/wash>