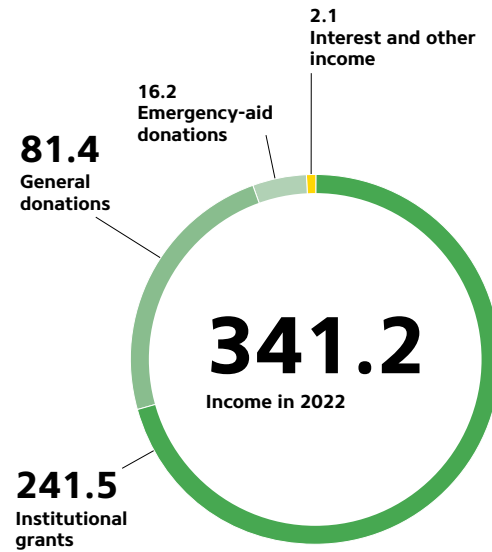




## 2022 IN BRIEF

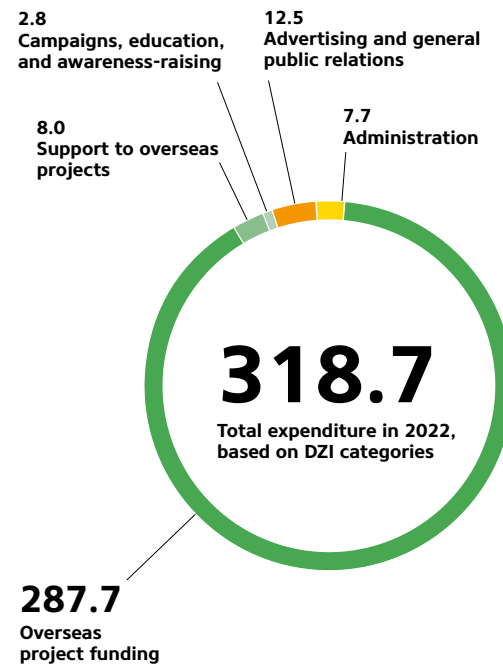
### INCOME

(in EUR millions)



### EXPENDITURE

(in EUR millions)



### INTERESTED IN LEARNING MORE?

➤ **Do you want to keep up to date?**  
Our newsletter has the latest news about our work and our projects throughout the world. Join the mailing list at: [www.welthungerhilfe.de/updates](http://www.welthungerhilfe.de/updates) (in German)



➤ **Would you like to read more about the issues mentioned in the Annual Report for 2022?**  
More details are available at: [www.welthungerhilfe.de/weitere-infos](http://www.welthungerhilfe.de/weitere-infos) (in German)

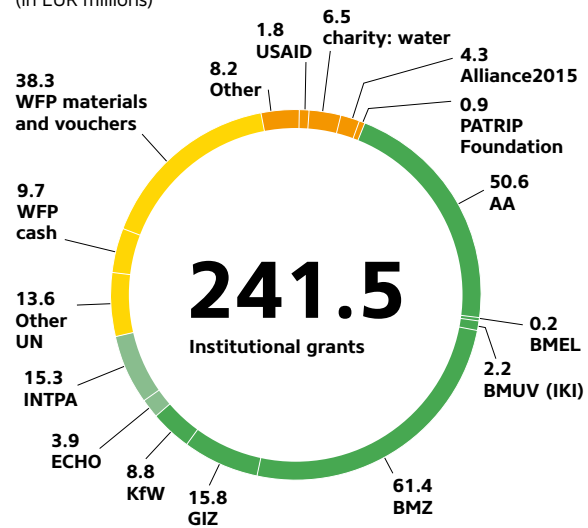


➤ **The Annual Report for 2022** can be downloaded at: [www.welthungerhilfe.org/annual-report](http://www.welthungerhilfe.org/annual-report)

K&K-ENGL-36/23

### INSTITUTIONAL GRANTS

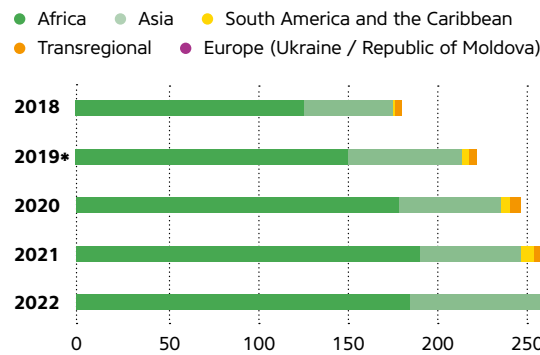
(in EUR millions)



**Abbreviations:** AA - Auswärtiges Amt [Federal Foreign Office]; Alliance2015 - partner organizations in Alliance2015; BMEL - Bundesministerium für Ernährung und Landwirtschaft [Federal Ministry of Food and Agriculture]; BMUV (IKI) - Bundesministerium für Umwelt, Naturschutz, nukleare Sicherheit und Verbraucherschutz [Internationale Klimaschutzinitiative] [Federal Ministry for the Environment, Nature Conservation, Nuclear Safety and Consumer Protection (International Climate Initiative)]; BMZ - Bundesministerium für wirtschaftliche Zusammenarbeit und Entwicklung [Federal Ministry for Economic Cooperation and Development]; ECHO - European Commission (Directorate-General for European Civil Protection and Humanitarian Aid Operations); GIZ - Deutsche Gesellschaft für Internationale Zusammenarbeit [German Association for International Cooperation]; INTPA - European Commission (Directorate-General for International Partnerships); KfW - Kreditanstalt für Wiederaufbau [KfW Development Bank]; UN - United Nations; USAID - United States Agency for International Development; WFP - United Nations World Food Programme

### REGIONAL PROJECT FUNDING

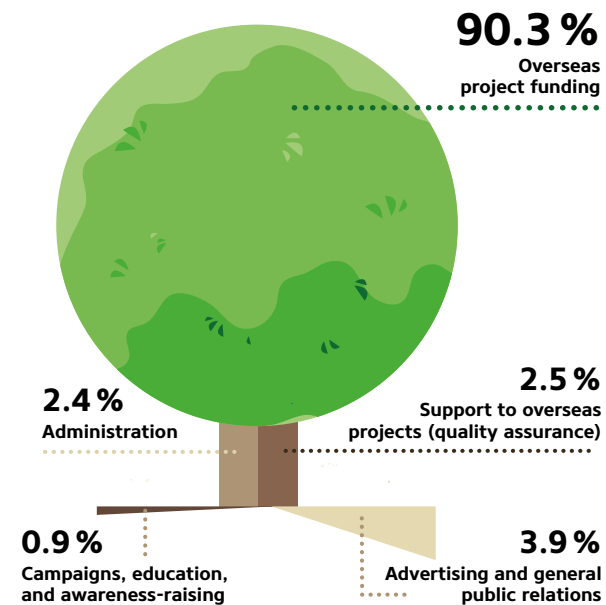
(in EUR millions)



\* Figures from 2019 onwards follow a revised accounting system

### WHAT HAPPENS TO YOUR DONATIONS?

In 2022, we used them for:\*



\* Based on expense categories as defined by the German Central Institute for Social Issues (DZI), in percent. Welthungerhilfe (WHH) is regularly audited by DZI.

### WE BOOST YOUR DONATIONS

Your donations give us the leverage necessary to apply for further funds from public grant providers—such as the Federal Ministry for Economic Cooperation and Development (BMZ), the Federal Foreign Office (AA), and the European Union (EU)—and to win them over with our project ideas. As a rule, this allows each donation to be quadrupled, with donations of EUR 100 becoming up to EUR 400 of project funding.



The DZI donation seal certifies Welthungerhilfe's efficient and responsible handling of the funds entrusted to it since 1992.

**Welthungerhilfe, IBAN DE15370501980000001115, BIC COLSDE33**

Deutsche Welthungerhilfe e.V., Friedrich-Ebert-Strasse 1, 53173 Bonn, Germany  
Tel. +49 (0)228 2288-0, Fax +49 (0)228 2288-333, [www.welthungerhilfe.org](http://www.welthungerhilfe.org)

# WHAT WE ACHIEVE

Since it was founded in 1962, Welthungerhilfe has funded 11,498 international projects to the tune of around EUR 4.75 billion.

In 2022 alone, Welthungerhilfe (WHH) supported about 18.8 million people with its 603 overseas projects in 37 countries. Thanks to our national partners, we were able to both provide immediate assistance in acute emergencies and implement long-term programs specifically tailored to each region. Many people's harvests and incomes have increased and, with better nutrition and access to clean drinking water, they get sick less often. For children, Welthungerhilfe's support provides opportunities for improved physical and cognitive development—so they can choose their own future directions.

## WORLDWIDE

37 countries

**18.8 million**  
people supported

603 international projects  
EUR 287.4 million in funding  
266 national partner organizations

## SOUTH AMERICA AND THE CARIBBEAN

3 countries

**0.1 million**  
people supported

15 projects  
EUR 7.9 million in funding  
18 national partner organizations

## AFRICA

17 countries

**12.1 million**  
people supported

366 projects  
EUR 185.1 million in funding  
139 national partner organizations

## ASIA

14 countries

**6.5 million**  
people supported

168 projects  
EUR 76.2 million in funding  
107 national partner organizations

## EUROPE

2 countries

**0.1 million**  
people supported

8 projects  
EUR 9.6 million in funding  
2 national partner organizations

## TRANSREGIONAL

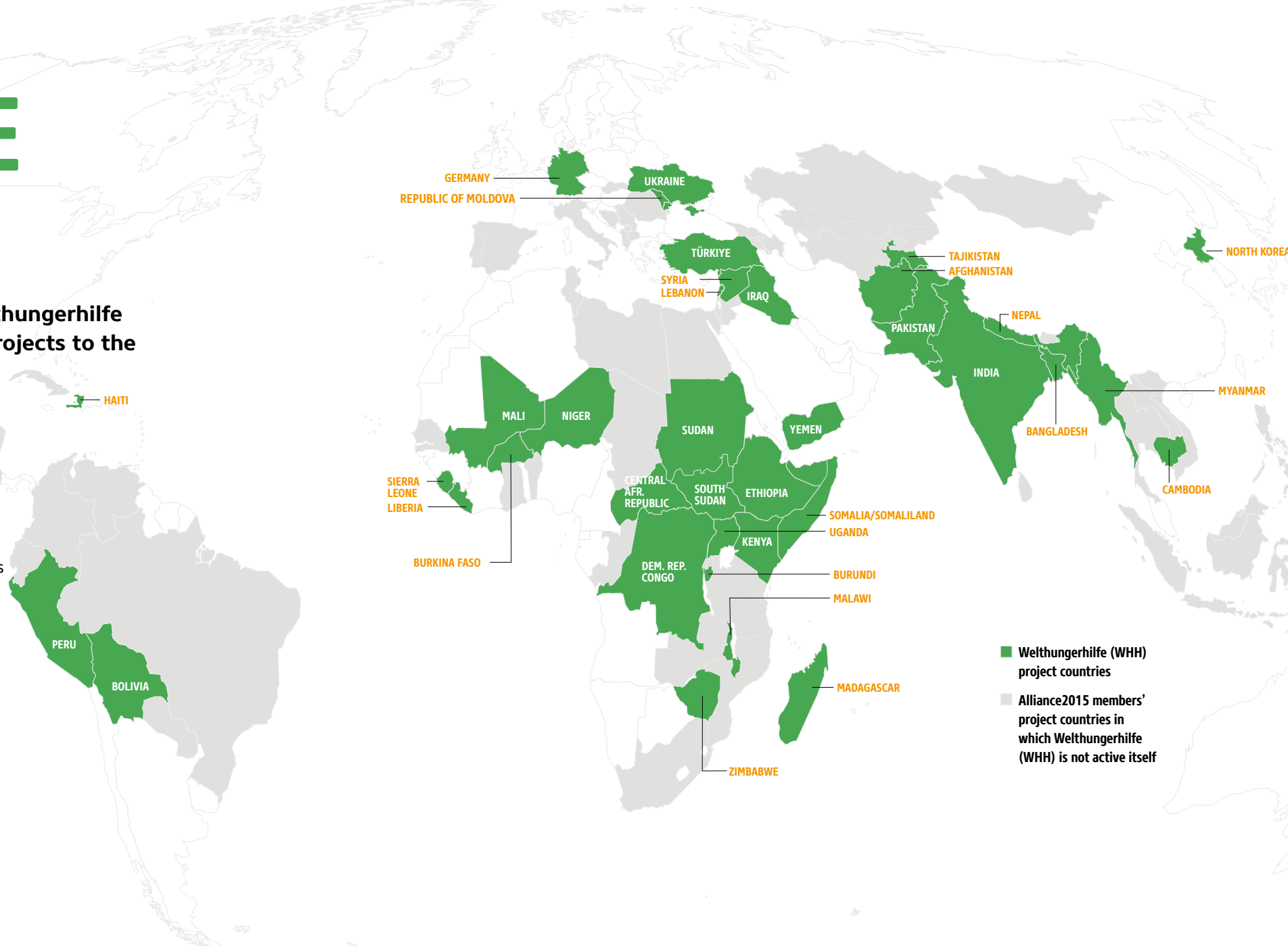
Transregional projects focus primarily on innovation, policy making, and quality assurance.

46 projects  
EUR 8.6 million in funding

## DOMESTIC PROJECTS (GERMANY)

Our domestic projects aim to inform people in Germany about hunger and poverty and to promote active engagement in achieving a world without hunger.

11 domestic projects  
EUR 0.8 million in funding



■ Welthungerhilfe (WHH) project countries  
■ Alliance2015 members' project countries in which Welthungerhilfe (WHH) is not active itself